



# FIRESTOPPING PRODUCTS

INTUMET™ is a TRADEMARK of ZERO INTERNATIONAL, INC.

Products Made In the USA

### Test Data:

ANSI A 117.1 - 1986	ASTM E 84
ASTM C 771	ASTM E 119
ASTM D 1929	ASTM G 53
ASTM D 2126	

## INTUMET™ WS - Wrap Strip

### Product Description:

Wrap Strip is a highly intumescent firestop material. It expands when exposed to heat and forms a hard char to seal off the annular spaces and prevent the spread of flames and hot gases.

### Application:

For plastic and insulated pipe. Tightly wrap the required number of strips around the penetrant to completely fill the annular space.

**Size:** 1"(25.4) x 1/4"(6.4) x 8'(2438.4) roll  
2"(60.8) x 1/4"(6.4) x 8'(2438.4) roll  
1"(25.4) x 1/2"(12.7) x 8'(2438.4) roll

**Color:** Black



## INTUMET™ PC - Pipe Collar

### Product Description:

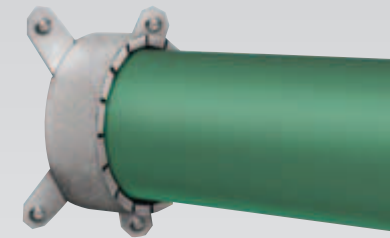
Pipe Collar is a prefabricated device for through-penetrations of non-metallic pipes. It contains a heavy gauge metallic collar filled with pliable intumescent.

### Application:

For through-penetrations, with plastic pipe.

**Size:** 1/2"(12.7) nominal O.D. pipe  
2"(50.8) nominal O.D. pipe  
3"(76.2) nominal O.D. pipe  
4"(101.6) nominal O.D. pipe  
6"(152.4) nominal O.D. pipe

**Color:** Silver



## INTUMET™ JS - Joint Strip

### Product Description:

Joint Strip is a highly intumescent firestop material used in concrete and masonry control joints up to 1". It forms a strong char that prevents the passage of flame, smoke and hot gases between control joints.

### Application:

For curtain wall panels and vertical concrete and masonry construction joint applications.



**Size:** 1/16"(1.6) x 1"(25.4) x 8'(2438.4)  
1/16"(1.6) x 1 1/2"(38.1) x 8'(2438.4)

**Color:** Black

## INTUMET™ DPW - Duct & Plenum Wrap

### Product Description:

This foil encapsulated, non combustible, flexible wrap is used for grease ducts, air ducts, and plenum air spaces.

### Application:

For through-penetrations, with plastic pipe.

**Size:** 1/8"(3.2) x 1 1/2"(38.1) x 2'(609.6)  
1/8"(3.2) x 1 1/2"(38.1) x 4'(1219.2)  
1/8"(3.2) x 2"(50.8) x 2'(609.6)  
1/8"(3.2) x 2"(50.8) x 4'(1219.2)

**Color:** Black

### ZERO INTERNATIONAL, INC.

415 Concord Avenue, Bronx, New York 10455-1004

Voice: (718) 585-3230 (800) 635-5335

Fax: (718) 292-2243 (800) 851-0000

Website: [www.zerointernational.com](http://www.zerointernational.com)

## INTUMET™ EB - Electrical Box Insert

### Product Description:

Electrical Box Insert is a highly intumescent, protective pad for use inside electric boxes.

### Application:

For use in metallic electrical boxes. Installed in back of the box with PSA tape.

**Size:** 2"(50.8) x 4"(101.6) x 1/8"(3.2)  
4"(101.6) x 4"(101.6) x 1/8"(3.2)  
2"(50.8) x 4"(101.6) x 1/4"(6.4)  
4"(101.6) x 4"(101.6) x 1/4"(6.4)  
(50 pads / carton)

**Color:** Fire Red



## INTUMET™ FP - Firestop Pillows

### Product Description:

INTUMET FP is a compressible firestop device used for installations where frequent changes may be required. Enclosed in a strong polyethylene bag.

### Application:

For large openings with cables, cable trays, and blank openings.

**Size:** Part# FP 294 2"(50.8) x 9"(228.6) x 4"(101.6)  
Part# FP 296 2"(50.8) x 9"(228.6) x 6"(152.4)  
Part# FP 396 3"(76.2) x 9"(228.6) x 6"(152.4)

**Color:** Fire Red



## INTUMET™ CS - Composite Sheet

### Product Description:

Soft puff 3003 Intumescent material laminated during manufacturing to a galvanized steel sheet. The product is reinforced with fire resistant fiberglass wire mesh, to control and direct expansion during fire.

### Application:

For penetrations in fire rated walls and floors, openings in concrete blocks and slabs.

**Size:** Part# CS1224 12"(304.8) x 24"(609.6)  
Part# CS1628 16"(406.4) x 28"(711.2)  
Part# CS2436 24"(609.6) x 36"(914.4)  
Part# CS2852 28"(711.2) x 52"(1320.8)  
Part# CS3636 36"(914.4) x 36"(914.4)  
Part# CS3641 36"(914.4) x 41"(1041.4)  
All material is .3125"(7.9) thick

**Color:** Grey



## INTUMET™ FS - Firestop Sheet

### Product Description:

Highly intumescent firestop material in sheet form.

**Size:** Part# FS 3003  
12"(304.8) x 96"(2438.4) x .062" (1.6) thick  
12"(304.8) x 96"(2438.4) x .125"(3.2) thick  
Expands 20 times.

Part# FS 4004  
12"(304.8) x 96"(2438.4) x .062" (1.6) thick  
12"(304.8) x 96"(2438.4) x .125"(3.2) thick  
Expands 80 times.

**Color:** Red, Black, Gray, Brown, White



www.zerointernational.com