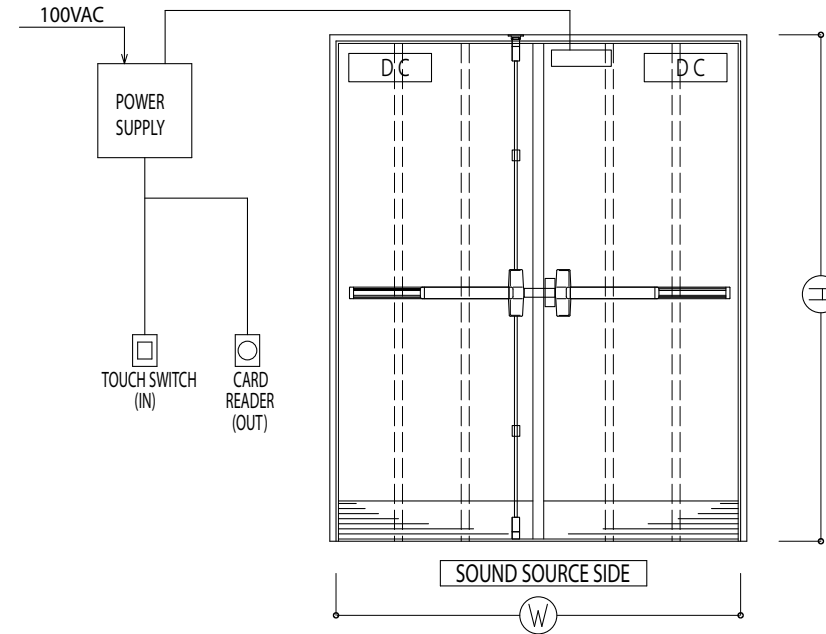
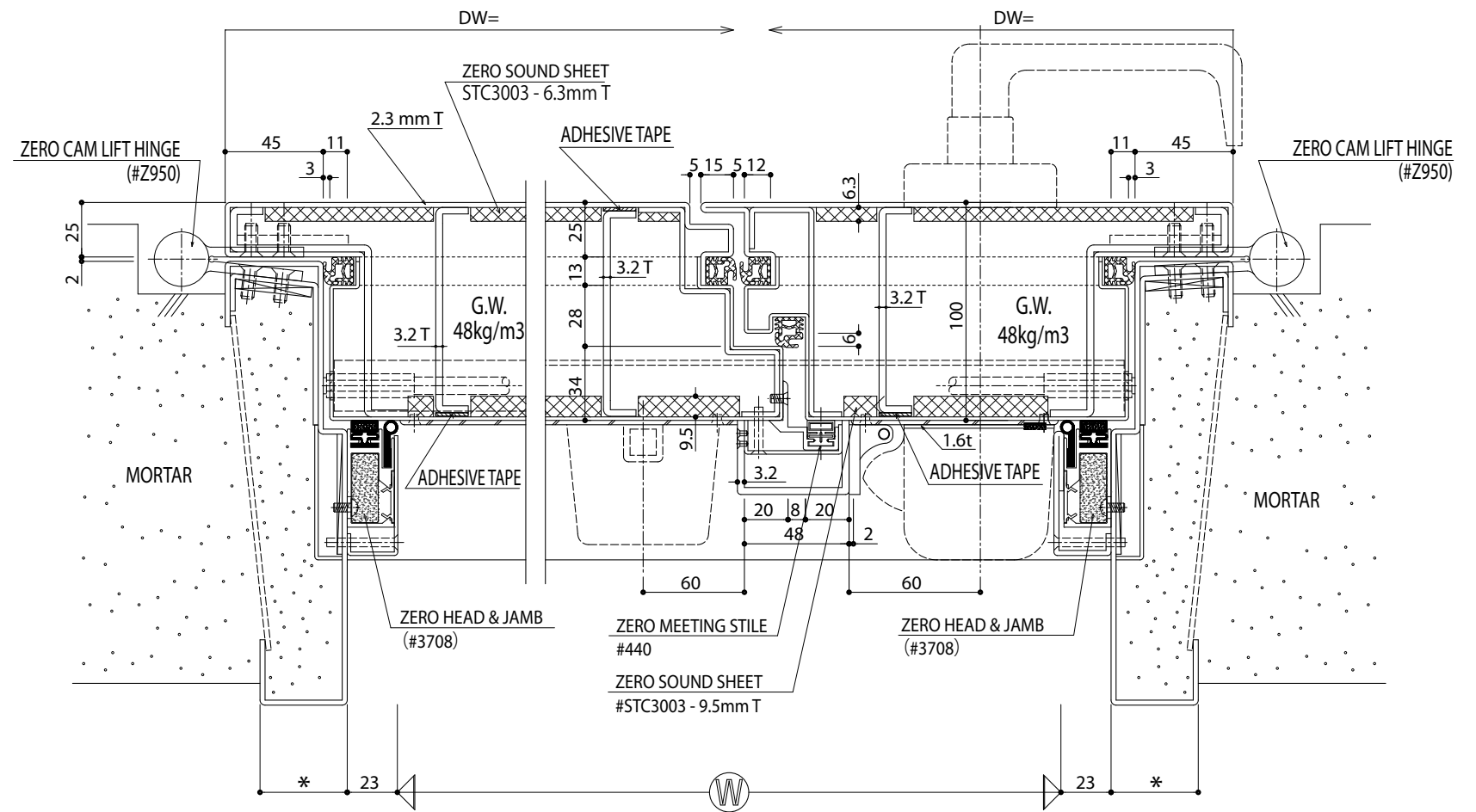


SOUND SOURCE SIDE



MARK	SD	PLACE	QTY	GLASS	REMARKS
W	FDW50				
H					
ITEMS	PRODUCTS	QTY.	REMARKS		
ZERO CAM LIFT HINGE	#Z950	4	(6)		
ZERO AUTO. DOOR BOTTOM	#368	2			
ZERO HEAD & JAMB	#3708	3			
ZERO MEETING STILES	#440	1			
NEOPRENE RUBBER	FAZ-4	8	FUJIOK AT		
KICK PLATE		2			
SURFACE DOOR CLOSER	#4041	2			
EXIT DEVICE (ACTIVE, INACTIVE)	#L98/9827	2	OPTION		
EM LOCK (OPTION)	#GM10020TD	1	HOLDING FORCE =540KG		
CARD READER (OPTION)	#GM-KS500	1	OUTSIDE		
TOUCH SWITCH (OPTION)	#GM-BTS200	1	OUTSIDE		
DOOR STOP		2			
ZERO SOUND SHEET	STC3003	2	6.3 + 9.5 mm T		

* INSIDE OF DOOR: G.W. 48KG/M3
 * DOOR STOP MUST BE USED
 * FINISH OF DOOR HARDWARE NEED TO BE SPECIFIED
 * (6) DH OVER 2400mm



SOUND SOURCE SIDE

APPROVED	
DATE	
BY	

* REINFORCEMENT MATERIALS AND SETTING ARE FOR REFERENCE ONLY

* EXIT DEVICE CAN BE REPLACED TO A COMBINATION OR LEVER HANDLE AND AUTO FLUSH BOLT.

REMARKS
 DOOR AND FRAME MUST BE FILLED WITH MORTAR, GLASS WOOL OR ROCK WOOL

TITLE
ZERO CAM LIFT DOUBLE DOOR STC-50
 CHECKED BY
 DRAWN BY
 SCALE
 1/20 1/1



ZERO INTERNATIONAL, INC.
 ZERO ASIA PACIFIC CO., LTD.

PROJECT
 CUSTOMER
 CONSULTANT

PAGE
 DRAWING NO.
ZR-FDW50 STC-50