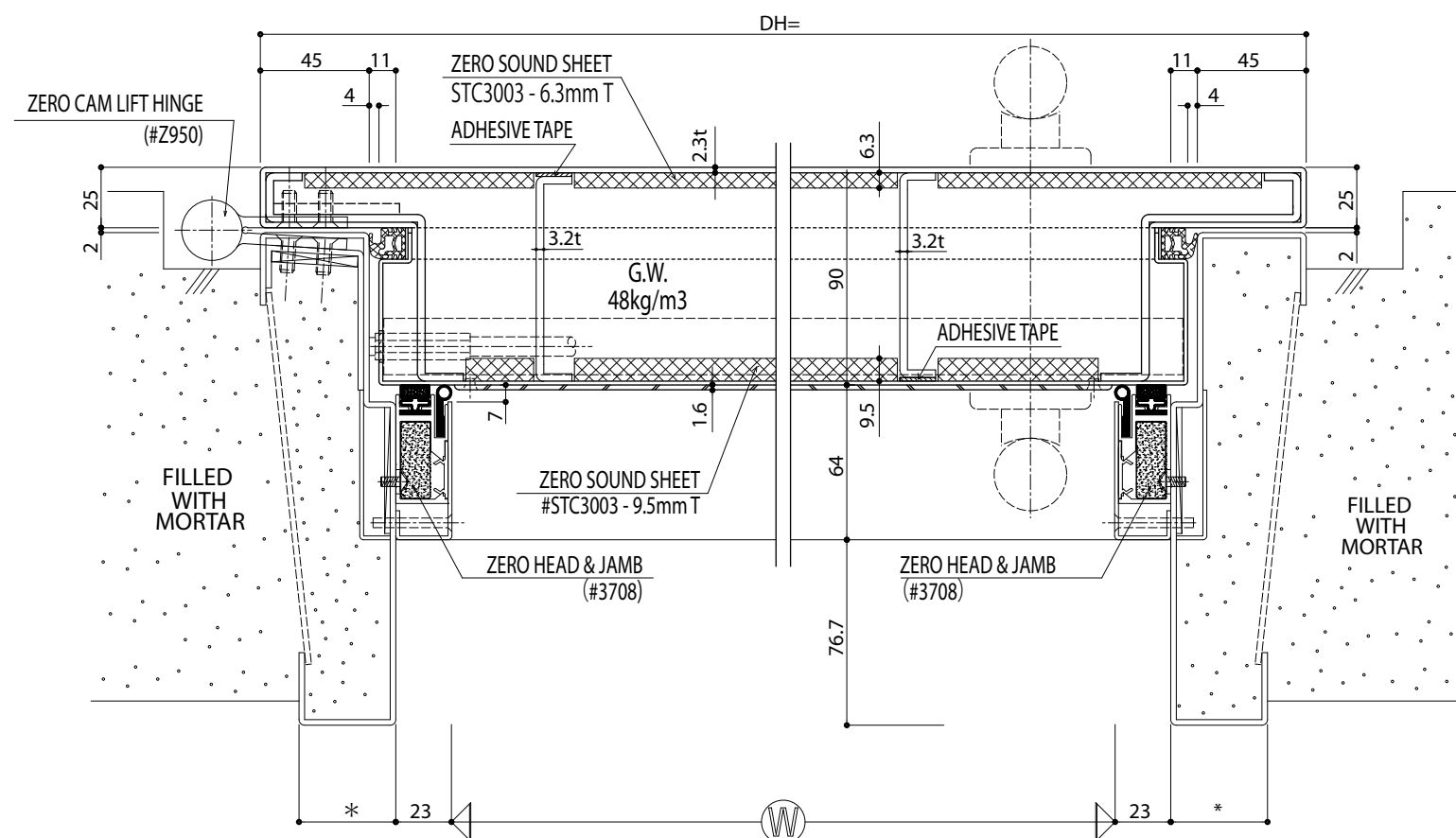


MARK	SD FD50	PLACE		
			QTY	GLASS
ITEMS		PRODUCTS	QTY.	REMARKS
		ZERO CAM LIFT HINGE	#Z950	2 (3)
		ZERO AUTO. DOOR BOTTOM	#368	1
		ZERO HEAD & JAMB	#3708	3
		NEOPRENE RUBBER	FAZ-4	4 FUJIOKATA
		KICK PLATE		1
		SURFACE DOOR CLOSER	#4041	1
		EM LOCK (OPTION)	#GM10020TD	1 HOLDING FORCE =540KG
		CARD READER (OPTION)	#GM-KS500	1 OUTSIDE
		TOUCH SWITCH (OPTION)	#GM-BTS200	1 INSIDE
		DOOR STOP		2
		ZERO SOUND SHEET	STC3003	2 6.3 + 9.5 mm T

\* INSIDE OF DOOR: G.W. 48KG/M3  
 \* DOOR STOP MUST BE USED  
 \* FINISH OF DOOR HARDWARE NEED TO BE SPECIFIED  
 \* (3) DH OVER 2400mm



SOUND SOURCE SIDE

APPROVED

DATE	
B Y	

REMARKS

DOOR AND FRAME MUST BE FILLED WITH MORTAR, GLASS WOOL OR ROCK WOOL

TITLE

ZERO CAM LIFT SINGLE DOOR STC-50

CHECKED BY

DRAWN BY

SCALE

1/20 1/1



ZERO INTERNATIONAL, INC.  
 ZERO ASIA PACIFIC CO., LTD.

PROJECT

CUSTOMER

CONSULTANT

PAGE

DRAWING NO.

ZR-FD50