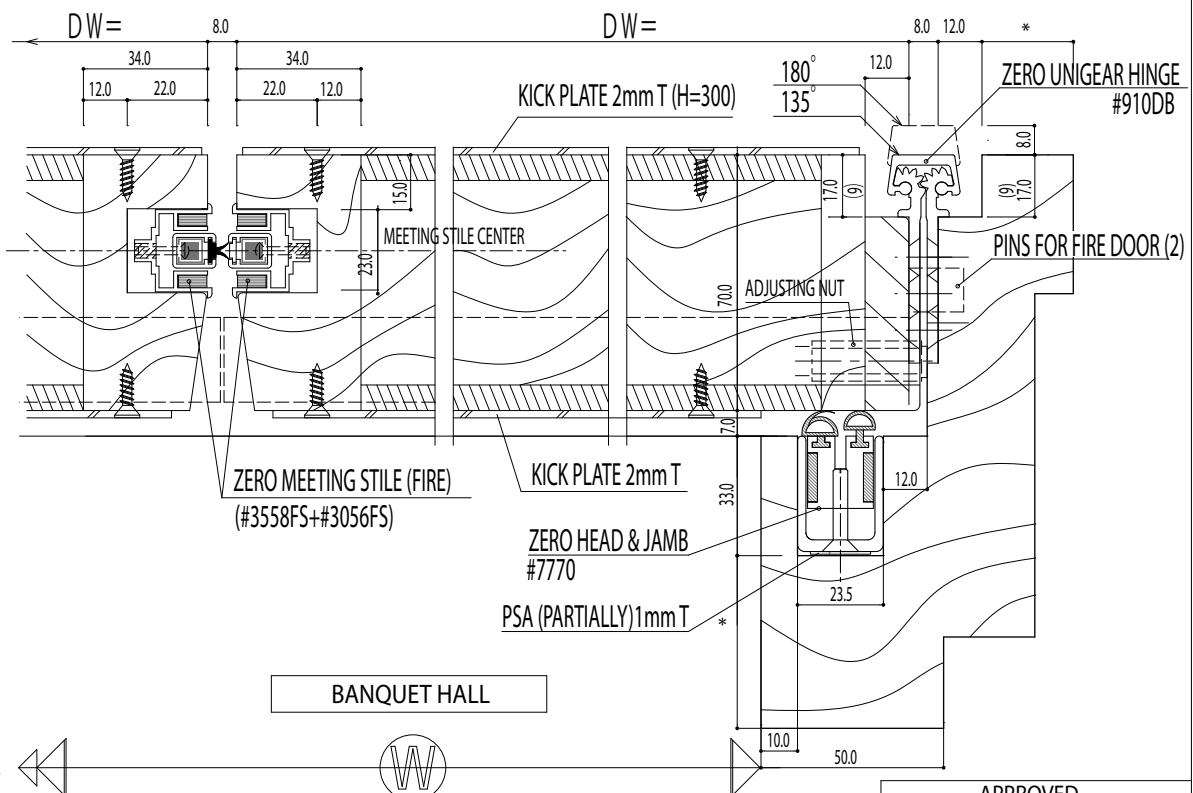


| MARK                   | PLACE           | QTY | GLASS | REMARKS |
|------------------------|-----------------|-----|-------|---------|
|                        |                 |     |       |         |
| ZERO UNIGEAR HINGE     | #910DB          | 2   |       | PINS    |
| ZERO AUTO. DOOR BOTTOM | #368            | 2   |       |         |
| ZERO MEETING STILES    | #3056FS+#3558FS | 1+1 |       |         |
| ZERO HEAD & JAMB       | #7770AA         | 3   |       |         |
| CONCEALED DOOR CLOSER  | #2310ME         | 2   | 24VDC |         |
| KICK PLATE             |                 | 4   |       |         |
| DOOR HANDLE            |                 | 2   |       |         |
| DOOR STOP              |                 | 2   |       |         |

\* INSIDE OF DOOR: G.W. 48KG/M3  
 \* DOOR STOP MUST BE USED  
 \* FINISH OF DOOR HARDWARE NEED TO BE SPECIFIED



\* REINFORCEMENT MATERIALS AND SETTING ARE FOR REFERENCE ONLY

|          |  |
|----------|--|
| APPROVED |  |
| DATE     |  |
| BY       |  |

|         |  |          |                   |
|---------|--|----------|-------------------|
| REMARKS | TITLE<br><b>DOUBLE WOOD DOOR (BANQUET HALL) STC-30</b> |          |                   |
|         | CHECKED BY   | DRAWN BY | SCALE<br>1/20 1/1 |
|         |  |          |                   |

ZERO INTERNATIONAL, INC.  
 ZERO ASIA PACIFIC CO., LTD.

|          |            |                                     |
|----------|------------|-------------------------------------|
| PROJECT  | PAGE       |                                     |
| CUSTOMER | CONSULTANT | DRAWING NO<br><b>ZR-100A-FIRE-A</b> |